



## CONTENTS

04 About  
the Global SAE-A Group

06 Enhance the value  
of the EPC construction  
business

About SAE-A STX Entech

10 Achieve innovation  
with experience and  
technology

Business areas

- Process plant
- Renewable energy
- Environmental plant
- Infrastructure

22 Pioneer new markets  
around the world

Global network

24 Repay the support of  
our customers and  
society with trust

Quality, Environment, Safety  
and Health Integrated  
Management System (IMS)

# CREATE A BETTER WORLD

Sae-A STX Entech, with specialized technology and extensive experience, maximizes synergies across plants, environmental facilities, infrastructure construction, and renewable energy value chains.

Through proactive investment in solar power and green hydrogen, we are committed to leading social and regional development in the eco-friendly energy sector. Our goal is to become a globally leading company.

Leading the apparel,  
paper manufacturing  
and EPC businesses

## A global company, GLOBAL SAE-A GROUP

The GLOBAL SAE-A GROUP, which leads the global apparel production and export sector, has been working with SAE-A STX Entech since 2018 to embark on a voyage to a greater future through synergy maximization and business diversification.



**SAE-A TRADING**  
The world's largest Apparel Manufacturer

**SAE-A SPINNING**  
Yarn Mill

**WIN TEXTILE**  
Fabric Mill

Future in Fashion  
**IN THE F**  
Fashion Apparel Retailer in Korea

**S&A**  
Fashion Apparel Retailer in Korea

**S2A**  
Art and Cultural  
communication and Investment



**GLOBAL  
SAE-A**

**VALMAX**  
Hydrogen Distribution  
**SAE-A STX ENTECH**  
Plant Construction

GLOBAL SAE-A GROUP  
**SSANGYONG**  
Engineering & Construction Co., Ltd.  
Engineering & Construction

**TAILIM PACKAGING**  
Packaging

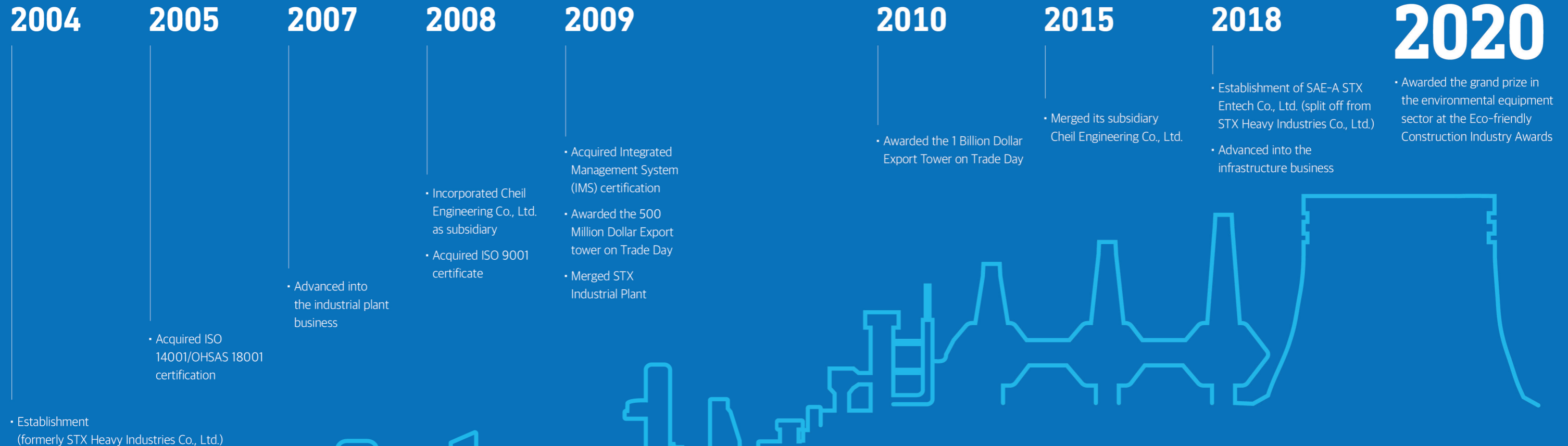
**TAILIM PAPER**  
Paper

**TAEBUM**  
Food & Beverage

**GOLF COURE  
ENTERPRISES**  
Golf Industry



Enhance the value of  
the EPC construction  
business



# Innovation History

SAE-A STX Entech's footsteps towards innovation

**“We will create a society where we live together with our customers,  
and a company that dreams of a better future.”**

SAE-A STX Entech is an EPC plant-specialized company that is growing on the basis of its extensive experience and superior professional technologies accumulated in domestic and overseas chemical engineering, power generation and environmental facilities.

After the plant business division of STX Heavy Industries was split off on Aug 1, 2018, SAE-A STX Entech was incorporated in to Gloal SAE-A and started anew as a comprehensive construction company with a diverse business portfolio including industrial plant and infrastructure business, and domestic and overseas real estate development, etc. in addition to process and power plant EPC.

In particular, SAE-A STX Entech is actively developing large-scale infrastructure projects, solar power generation projects, and eco-friendly new and renewable energy projects in Southeast Asian and Latin American countries as well as in Middle East countries and will establish itself as a global construction and plant company with sales of KRW 1 trillion.

SAE-A STX Entech will achieve continuous growth through transformation and innovation, constant challenges and a sense of responsibility amid the rapidly changing international situation and uncertain business environment. In addition, SAE-A STX Entech will endeavor to fulfil its social responsibilities to contribute to the development and growth of key national industries through strict ethical management.

We look forward to your unwavering interest and support for SAE-A STX Entech, which is meeting challenges towards a better world in the future.

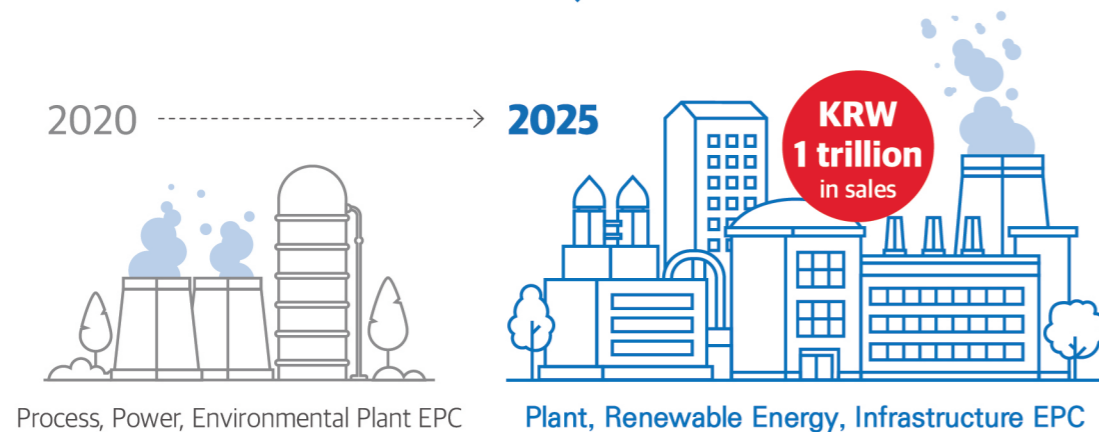
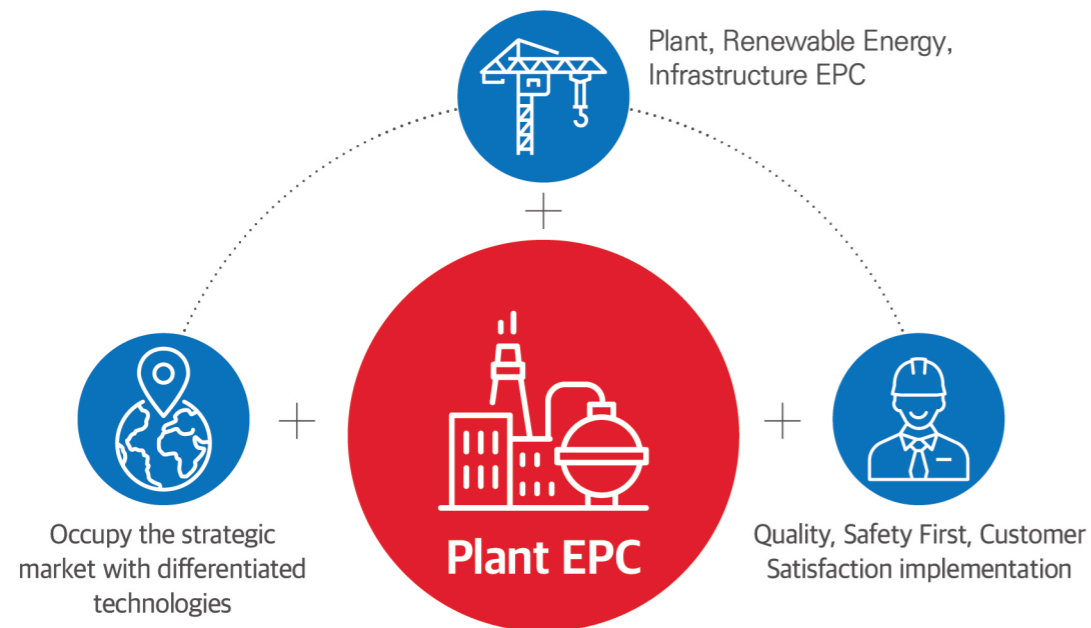
Thank you.

**Jeon Seung Min / CEO**

Enhance the value of the EPC construction business

## Vision & Strategy

As a technology-based sustainable Global Total Solution Provider, **we will become a comprehensive engineering & construction company with sales of KRW 1 trillion in 2025.**



Enhance the value of the EPC construction business

## Ideal Talents & Corporate Culture

**Recruitment based on Five Core Values**

The driving force behind the growth of SAE-A STX Entech is "people."



### A passionate actor

A person who acts with passion and a plan to produce results



### A team player who embraces other members and grows together with them

A person who shares common goals and pursues growth with the organization



### A self-motivated innovator

A person who can motivate himself/herself and produces results through practice



### A leader who is not afraid of change

A person who can lead the organization with new thinking while preparing for the future



### An expert pursuing the best

A person who aims for the best in his/her field and contributes to organizational performance

**Our efforts for a pleasant workplace**

We create a company where employees feel happy and have fun.



### Compensation and Benefits Sharing

Consistently improve the benefit sharing system to provide reasonable compensation for the achievements made by employees and share the company's business achievements



### Encouragement of employee participation

Provide continuous support and implement systems to establish a "corporate culture created by the employees themselves" on the basis of autonomy and creativity



### Balance between work and family life

Actively and continuously provide support for employees to maintain a balance between work and family life

Process Plant



Renewable Energy



Power Plant



Environmental plant



**Achieve innovation**  
with experience and technology

SAE-A STX Entech, which is implementing various domestic and overseas plant EPC projects and infrastructure construction projects with its superior professional technologies and extensive experience, provides optimal solutions that put customer satisfaction first, and is growing into a global EPC company recognized around the world.

Achieve innovation with experience and technology

## Process Plant

### Oil & Gas

#### Existing Degassing Station Modification

- 2012 / Iraq / USD 200 million
- A modification project for separation and production facilities of 80,000 barrels of crude oil per day

#### Garraf Gas Treatment Unit

- 2013 / Iraq / USD 100 million
- Won an order for a gas treatment facility
- Has been recognized for its technological prowess and experience in the oil and gas field in the Middle East



**Garraf Gas Treatment Unit**  
 Client : PETRONAS Carigali Iraq Holding B.V.  
 Scope : EPC of Gas treatment Unit for Oil-gas Separation  
 Location : Garraf Oil Field, Iraq  
 Execution period : 2013. 11 ~ 2017. 03



#### Existing Degassing Station Modification

Client : Eni Iraq B.V.  
 Scope : EPC of oil processing plant modification  
 Location : Zubair Oil Field, Iraq  
 Execution period : 2012. 07 ~ 2015. 06



#### DGS North Gas Out

Client : Eni Iraq B.V.  
 Scope : EPC of piping and related work  
 Location : Zubair Oil Field, Iraq  
 Execution period : 2019. 05 ~ 2020. 04



#### Produced Water Re-Injection

Client : BP Iraq NV  
 Scope : FEED of source water treatment unit + EPC of produced water re-injection facilities  
 Location : Rumaila Oil Field, Iraq  
 Execution period : 2019. 12 ~ 2024. 04



#### Flare System at West Qurna II

Client : Lukoil Mid-East Limited  
 Scope : EPC of flare system  
 Location : West Qurna II Oil Field, Iraq  
 Execution period : 2020. 01 ~ 2022. 12

SAE-A STX Entech, which has been recognized for its technological prowess in providing the best EPC solutions to oil and gas, refinery, and petrochemical plants in the Middle East and North Africa, is expanding and strengthening its process plant EPC capabilities through implementing the Tank Farm project in Southeast Asia and entering into the LNG storage facility market based on the various experiences accumulated over years.

### Petrochemical

- Successful implementation of domestic styrene butadiene rubber (SBR) plant expansion in 2008 with its experience in designing and purchasing services in the petrochemical field
- Accumulation of business experience in the petrochemical field with the successful implementation of mono nitro benzene (MNB) plant expansion



**SBR 80,000 MTPA Expansion Project**  
 Client : Kumho Petrochemical  
 Scope : EPC of SBR Plant expansion  
 Location : Ulsan, Korea  
 Execution period : 2007. 10 ~ 2008. 10

### Tank Farm

- Successful implementation of storage facilities in Thailand in 2009 on the basis of its experience in building storage facilities for crude oil and petrochemical products at home and abroad.



**MTT Tank Farm Expansion Project**  
 Client : Map Ta Phut Tank Terminal Co., Ltd.  
 Scope : EPC of Storage tank expansion  
 Location : Rayong, Thailand  
 Execution period : 2008. 01 ~ 2009. 12

Achieve innovation  
with experience and  
technology

## Power Plant



**EPC construction for Bukpyeong Thermal Power Plant**  
Client : GS E&R  
Scope : EPC  
Location : Donghae, Korea  
Execution period : 2012. 09 ~ 2019. 03

### Coal-fired power plant

- Korea's first large-scale privately funded thermal power plant, Bukpyeong Coal-Fired Thermal Power Plant Unit 1 and 2 EPC Construction Project, which is currently under successful operation
  - Increasing power generation efficiency and fundamentally reduce carbon dioxide emissions with the adoption of ultra-supercritical pressure technology that applies the highest pressure and temperature compared to other domestic power plants
  - Minimizing air pollution by introducing a cutting-edge system, establishing itself as Korea's representative eco-friendly power plant

SAE-A STX Entech is providing EPC construction and O&M services for power plants using a wide range of power generation sources such as coal-fired power plants, combined cycle power plants, cogeneration power plants, diesel engine power plants, and new and renewable energy power plants.

SAE-A STX Entech is recognized for its capabilities at home and abroad by successfully performing the first private EPC construction in Korea and EPCC and O&M for gas turbine power plants ordered by the ministry of energy in Iraq.

### Gas turbine power plant

- Implementation of 500 MW gas turbine power plant project for the Ministry of Energy in Iraq in 2012
- Implementation of power plant operation and maintenance (O&M) for one year after completion, including EPC construction
- Recognized by the client for SAE-A STX Entech's technology and quality, it won additional O&M contracts and has achieved the highest availability rate among power plants in Iraq during the same period.



#### Al-Amara Gas Turbine Power Plant Project

Client : Ministry of Electricity, Iraq  
Scope : EPCC + O&M  
Location : Amara, Iraq  
Execution period : 2012. 12 ~ 2016. 12

#### Al-Amara Gas Turbine Power Plant O&M

Client : Ministry of Electricity, Iraq  
Scope : O&M  
Location : Amara, Iraq  
Execution period : 2017. 01 ~ 2017. 12

### Diesel power plant

- Completion of 900 MW diesel engine power plant in Iraq, the largest single diesel contract of power plant in the world, in a short period of time
  - Proved competitiveness in the diesel power plant field in the Iraqi market



#### HFO Diesel Power Plant (DPP) Project

Client : Ministry of Electricity, Iraq  
Scope : EPCC + O&M  
Location : Diwaniyah / Karbala / Missan, Iraq  
Execution period : 2011. 09 ~ 2013. 06



#### NRC Diesel Power Plant Project

Client : North Refineries Company, Iraq  
Scope : EPCC  
Location : Baiji, Iraq  
Execution period : 2011. 03 ~ 2013. 05

Achieve innovation with experience and technology

## Renewable Energy

### Renewable Energy

- Supplying land-based, rooftop, and floating solar power generation systems
- Offering high-efficiency hydrogen production facilities utilizing PEM electrolysis technology
- Delivering green hydrogen production solutions powered by solar energy



Construction of Solar Power Plant and ESS facilities in Haiti  
 Client : MEF  
 Scope : EPC + O&M  
 Location : Haiti  
 Execution period : 2024. 07 ~ 2025. 10

SEA-A STX Entech provides comprehensive EPC (Engineering, Procurement, and Construction) services for solar and wind power generation projects and is expanding into the hydrogen sector in collaboration with group affiliates. By offering investment, operation, and maintenance services in addition to EPC, we position ourselves as a total solutions provider in new and renewable energy, supporting a sustainable energy transition



Indonesia PT-Winners, Wintex Solar Power Plant

Client : PT-Winners, Wintex  
 Scope : EP+CM  
 Location : Indonesia  
 Execution period : 2021~2023



Supplies, Installation, Training and Commissioning of Off-Grid Photovoltaic System in Rural Areas

Client : MEM(Ministry of Energy and Mines)  
 Scope : EPC  
 Location : Nicaragua  
 Execution period : 2019~2024



Gumi Solar Power Plant

Client : E&R Solar  
 Scope : EPC  
 Location : Gumi, Korea  
 Execution period : 2008 ~ 2009



Hangwon Wind Power Plant Installation Construction

Client : Hangwon Wind Power  
 Scope : EPC + O&M  
 Location : Jeju, Korea  
 Execution period : 2012.10 ~ 2012.12

Achieve innovation with experience and technology

## Environmental plant

### Wet Limestone-Gypsum Flue Gas desulfurization facility



- Removal of sulfur oxides (SOx) in flue gas by spraying slurry containing limestone from an absorption tower
- A number of business records from 1998 to the present

#### Boryeong Thermal Power Unit 3 Retrofit

Client : Korea Midland Power Co.,Ltd  
Scope : EPC  
Location : Boryeong, Chungnam  
Execution period : 2018. 01 ~ 2020. 02



#### Iraq Khabat Unit 1 and 2

Client : POSCO E&C  
Scope : EP + SV  
Location : Kurd Khabat, Iraq  
Execution period : 2013. 12 ~ 2016. 09



#### Dangjin Thermal Power Unit 7 and 8

Client : Korea East-West Power Co., Ltd  
Scope : EP + SV  
Location : Dangjin, Chungnam  
Execution period : 2004. 12 ~ 2007. 02

#### Dangjin Thermal Power Unit 9 and 10

Client : Korea East-West Power Co., Ltd  
Scope : EPC  
Location : Dangjin, Chungnam  
Execution period : 2012.01~2016.08

#### Gumi Combined Heat and Power Plant

Client : GS E&R  
Scope : EPC  
Location : Gumi, Gyeongbuk  
Execution period : 2010. 10 ~ 2013. 12

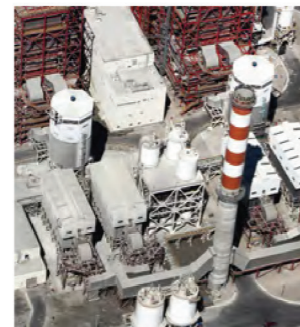
### Semi-dry Flue Gas Desulfurization Facilities

- Removal of sulfur oxide (SOx) in boiler flue gas by spraying slaked lime slurry through an atomizer
- Successful implementation of a number of projects in Latin America, strengthening its competitiveness in the Latin American market by activating the network through the Chile branch



#### Chile Tarapaca

Client : ENEL  
Scope : EPC  
Location : Iquique, Chile  
Execution period : 2014. 05 ~ 2017. 05



#### Chile Angamos Unit 1 and 2

Client : AES Gener S.A  
Scope : EP + SV  
Location : Antofagasta, Chile  
Execution period : 2008. 07 ~ 2011. 09

#### Colombia Termotasajero 2

Client : Termotasajero S.A  
Scope : EP+SV  
Location : San Cayetano, Colombia  
Execution period : 2012. 10 ~ 2017. 09

#### Chile Bocamina

Client : ENDESA Chile  
Scope : EPC  
Location : Coronel, Chile  
Execution period : 2012. 04 ~ 2017. 12

### Seawater flue gas desulfurization facilities

- Removal of sulfur oxides (SOx) from boiler flue gas by using seawater
- Proved its performance by successfully implementing a project in Morocco, expanding the business scope to Africa and Southeast Asia



#### Morocco Safi Unit 1 and 2

Client : Daewoo E&C  
Scope : EP + SV  
Location : Safi, Morocco  
Execution period : 2014. 12 ~ 2016. 06



#### Morocco Jorf Lasfar Unit 5 and 6

Client : Daewoo E&C  
Scope : EP + SV  
Location : El Jadida, Morocco  
Execution period : 2010. 12 ~ 2013. 03

SAE-A STX Entech provides the highest quality EPC service optimized for customer needs seeking carbon neutrality and eco-friendly plants based on its experience in carrying out various projects including construction of facilities for flue gas desulfurization, flue gas denitrification, electrostatic precipitation, and environmental pollution prevention.

### Flue Gas Denitrification facilities

- Removal of nitrogen oxide (NOx) from boiler flue gas by using catalyst
- Supply flue gas denitrification facilities optimized with technological prowess and know-how acquired through experience in the implementation of a number of projects



#### Yeongheung Thermal Power Unit 5 and 6

Client : Korea South-East Power Co., Ltd  
Scope : EP + SV  
Location : Yeongheungdo, Incheon  
Execution period : 2011. 04 ~ 2015. 10



#### Flue Gas Denitrification facilities for POSCO Power Plant

Client : POSCO  
Scope : EPC  
Location : Pohang, Gwangyang  
Execution period : 2019. 01 ~ 2021. 06



#### Samcheok Thermal Power Plant Unit 1 and 2

Client : Korea Southern Power Co., Ltd.  
Scope : EPC  
Location : Samcheok, Gangwon  
Execution period : 2012. 06 ~ 2016. 09

### Electrostatic precipitator

- Removal of the dust from boiler flue gas by collecting dust in a collection plate using electrostatic force
- Supply electrostatic precipitator with superior performance in removing fine dust



#### Electrostatic precipitator for Dangjin Unit 1 and 3

Client : Korea East-West Power  
Scope : EPC  
Location : Dangjin, Chungnam  
Execution period : 2019. 12 ~ 2021. 03

#### Bukpyeong Thermal Power Unit 1 and 2

Client : GS Donghae Electric Power Co., Ltd  
Scope : EPC  
Location : Donghae, Gangwon  
Execution period : 2012. 09 ~ 2018. 07

### Material Handling

- Facilities handling coal, limestone, gypsum and ash generated or used in power plants
- Business records in the supply of coal handling facilities (coal yard, cargo handling machine, ST/RE, conveyor, etc.), limestone handling facilities (conveyor, storage room, etc.), gypsum handling facilities (conveyors, storage facilities, etc.) and ash treatment facilities (transfer facilities, storage facility, etc.), applicable to various fields



#### Bukpyeong Thermal Power Unit 1 and 2

Client : GS Donghae Electric Power Co., Ltd  
Scope : EPC  
Location : Donghae, Gangwon  
Execution period :  
Limestone and gypsum handling facilities - 2012. 09 ~ 2018. 07  
Coal handling facilities and indoor coal yard - 2012. 09 ~ 2018. 01  
Ash treatment facilities - 2012. 09 ~ 2018. 01

Achieve innovation with experience and technology

# Infrastructure

## Civil engineering

- Construction of roads and industrial complexes by participating in civil engineering and SOC projects in the public and private sectors
- Contribution to the balanced development of the country and the development of the national economy



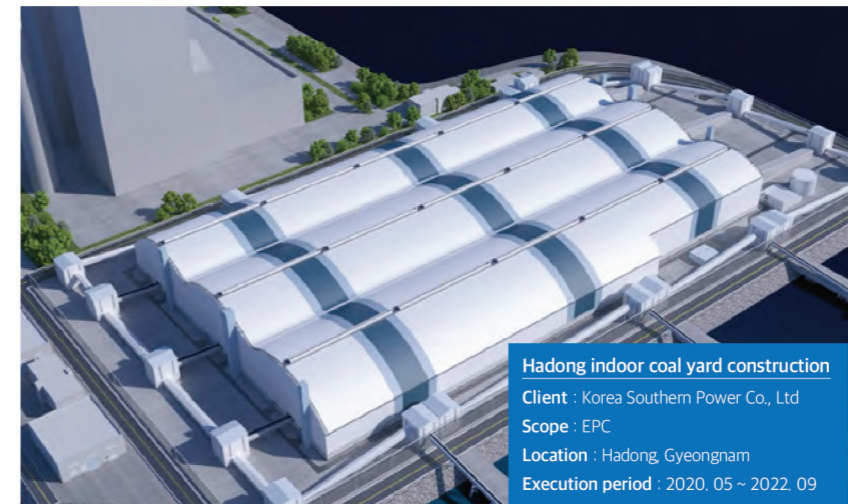
**Expansion of roads around Hwaseong Bibong District**  
 Client : Korea Land and Housing Corporation  
 Scope : C  
 Location : Hwaseong, Gyeonggi  
 Execution period : 2020. 02 ~ 2022. 08

**Myanmar KMIC Industrial Complex Construction (Phase 1)**  
 Client : KMIC  
 Scope : C  
 Location : Yangon, Myanmar  
 Execution period : 2020. 12 ~ 2022. 12

SAE-A STX Entech is expanding its business areas in the overseas market as well as in the domestic market on the basis of its experience in successfully implementing projects in various fields such as civil engineering, construction, and production facilities. Going one step further, we will to create optimal spaces that enhances the value of people's lives with innovative and creative real estate development.

## Architecture

- Sales and construction of all architectural products including residential facilities, business facilities, and production facilities at home and abroad
- Providing the best residential spaces for consumers
- Securing price competitiveness through continuous cost innovation
- Laying the foundation for sustainable growth through the development of new paradigms such as eco-friendly and energy-saving schemes



**Hadong indoor coal yard construction**  
 Client : Korea Southern Power Co., Ltd  
 Scope : EPC  
 Location : Hadong, Gyeongnam  
 Execution period : 2020. 05 ~ 2022. 09

**Construction Management of the 3rd Manufacturing Factory**  
 Client : SAE-A Technotex, S.A  
 Scope : CM  
 Location : Managua, Nicaragua  
 Execution period : 2018. 04 ~ 2019. 01

**Tailim Packaging Cheongwon Dormitory extension**  
 Client : Tailim Packaging  
 Scope : E+C  
 Location : Cheongju, Chungbuk  
 Execution period : 2020. 10 ~ 2021. 04



**Construction Management of the Garment Factory at Tegal**  
 Client : PT Winners International  
 Scope : CM  
 Location : Central Java, Indonesia  
 Execution period : 2019. 07 ~ 2020. 11



**Construction of the 2nd SAE-A SPINNING Factory**  
 Client : SAE-A SPINNING  
 Scope : EPC  
 Location : Cartago, Costa Rica  
 Execution period : 2020. 12 ~ 2021. 11



**S-TOWER Remodeling (1st and 2nd construction)**  
 Client : Global SAE-A  
 Scope : C  
 Location : Seoul, Korea  
 Execution period : 2018. 10 ~ 2021. 04

Pioneer new markets around the world



# Global Network

Having secured superior competitiveness in the Middle East and South American markets together with its subsidiaries in Iraq and Chile, SAE-A STX Entech is creating greater synergy by linking with the Global SAE-A Group's strong global network established around the world, advancing into the global market

Global SAE-A Group overseas network

- Office
- Factory

SAE-A STX Entech overseas branches

- Branch

Repay the support of our customers and society with trust

## Quality, Environment, Safety and Health Integrated Management System (IMS)

SAE-A STX Entech aims for customer satisfaction through the highest quality, sustainable environmental preservation, and zero-accident management, and operates a certified quality, environment, safety and health integrated management system (IMS).



Quality Management System (ISO9001)



Environmental Management System (ISO14001)



Safety and Health Management System (ISO45001)

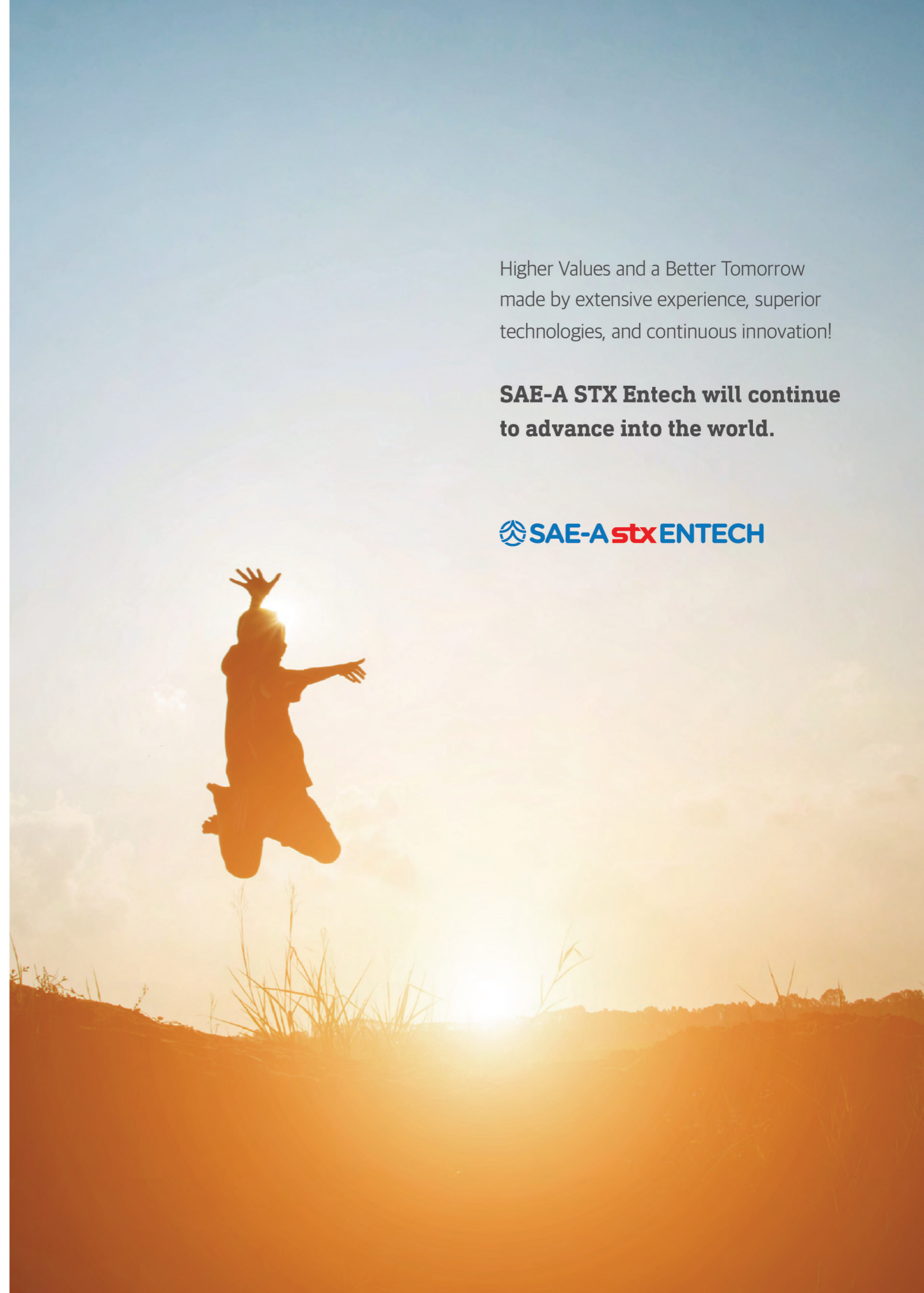


### Integrated Management System (IMS) Policies

1. Achieve customer satisfaction and win trust from customers with the best quality through continuous improvement along with compliance with the integrated management system.
2. Comply with all laws and requirements related to our business at home and abroad.
3. Pursue a zero-accident workplace by improving the safety awareness of all employees and continuous improvement of the management system.
4. All executives and employees adhere to the principles of safety and health management and environmental preservation through compliance with all regulations and procedures.
5. Minimize the impact on the environment through pollution prevention, minimization of waste and emission materials, and efficient use of energy and resources.
6. Establish and operate performance targets as a sustainable strategy for effective implementation of IMS policies.

Higher Values and a Better Tomorrow made by extensive experience, superior technologies, and continuous innovation!

**SAE-A STX Entech will continue to advance into the world.**



CREATE A BETTER WORLD



[www.sae-astx.com](http://www.sae-astx.com)

S-TOWER (10F), 325 Yeongdong-daero, Gangnam-gu, Seoul

Tel : +82-2-6960-6114